

QUICKwash™

USER'S GUIDE

USER'S GUIDE

1970 SERIES QUICKWASH 220-240V

2080 SERIES PETWASH POWERBRUSH 220-240V



3 Safety Instructions

4 Product View

5 Assembly

6-8 Operation

8-9 Maintenance and Care

10 Troubleshooting

10 Consumer Services

11 Replacement Parts

12 Warranty



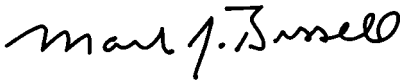
Thank you for buying a BISSELL Lightweight Deep Cleaner

We're glad you purchased a BISSELL lightweight deep cleaner. Everything we know about floor care went into the design and construction of this complete, high-tech home cleaning system.

Your BISSELL deep cleaner is well made, and we back it with a limited two year warranty. We also stand behind it with a knowledgeable, dedicated Consumer Services department, so, should you ever have a problem, you'll receive fast, considerate assistance.

My great-grandfather invented the floor sweeper in 1876. Today, BISSELL is a global leader in the design, manufacture, and service of high quality homecare products like your BISSELL deep cleaner.

Thanks again, from all of us at BISSELL.



Mark J. Bissell
President and Chief Executive Officer

IMPORTANT SAFETY INSTRUCTIONS

When using an electrical appliance, basic precautions should be observed, including the following:

READ ALL INSTRUCTIONS BEFORE USING YOUR DEEP CLEANER.

Always connect to a properly Earthed Outlet. Unplug from outlet when not in use and before conducting maintenance or troubleshooting.

WARNING: To reduce the risk of fire, electric shock, or injury:

- Use indoors only
- Do not immerse
- Use only on surfaces moistened by cleaning process
- Do not leave machine when it is plugged in
- Do not service machine when it is plugged in
- If the supply cord is damaged, it must be replaced by the manufacturer or its service agent in order to avoid a hazard
- Do not use machine if it has been dropped, damaged, left outdoors or dropped into water
- Do not expose to rain, store indoors
- Do not pull or carry by cord, use cord as a handle, close door on cord, pull cord around sharp corners or edges, run appliance over cord, or expose cord to heated surfaces
- Do not carry the appliance while in use
- Do not unplug by pulling on cord. Unplug by grasping plug not the cord
- Do not handle plug or appliance with wet hands
- Do not put any object into appliance openings, use with blocked opening, or restrict air flow
- Do not expose hair, loose clothing, fingers or body parts to openings or moving parts
- Do not pick up hot or burning objects
- Do not pick up flammable or combustible materials (lighter fluid, petrol, kerosene, etc.) or use in the presence of explosive liquids or vapour
- Do not use appliance in an enclosed space filled with vapours given off by oil base paint, paint thinner, some moth proofing substances, flammable dust, or other explosive or toxic vapours

- Remove plug from electrical outlet before cleaning or maintaining the appliance
- Not intended for use by young children or infirm persons without supervision
- Young children should be supervised to ensure that they do not play with the appliance
- Do not pick up toxic material (chlorine bleach, ammonia, drain cleaner, petrol, etc.)
- Do not modify the Earthed plug
- Do not allow to be used as a toy
- Do not use for any purpose other than described in this User's Guide
- Use only manufacturer's recommended attachments
- Use only cleaning products formulated by BISSELL for use in this appliance to prevent internal component damage
- Keep openings free of dust, lint, hair, etc.
- Keep appliance on a level surface
- Turn off all controls before unplugging
- Be extra careful when cleaning stairs
- Pay close attention when working around children

SAVE THESE INSTRUCTIONS.

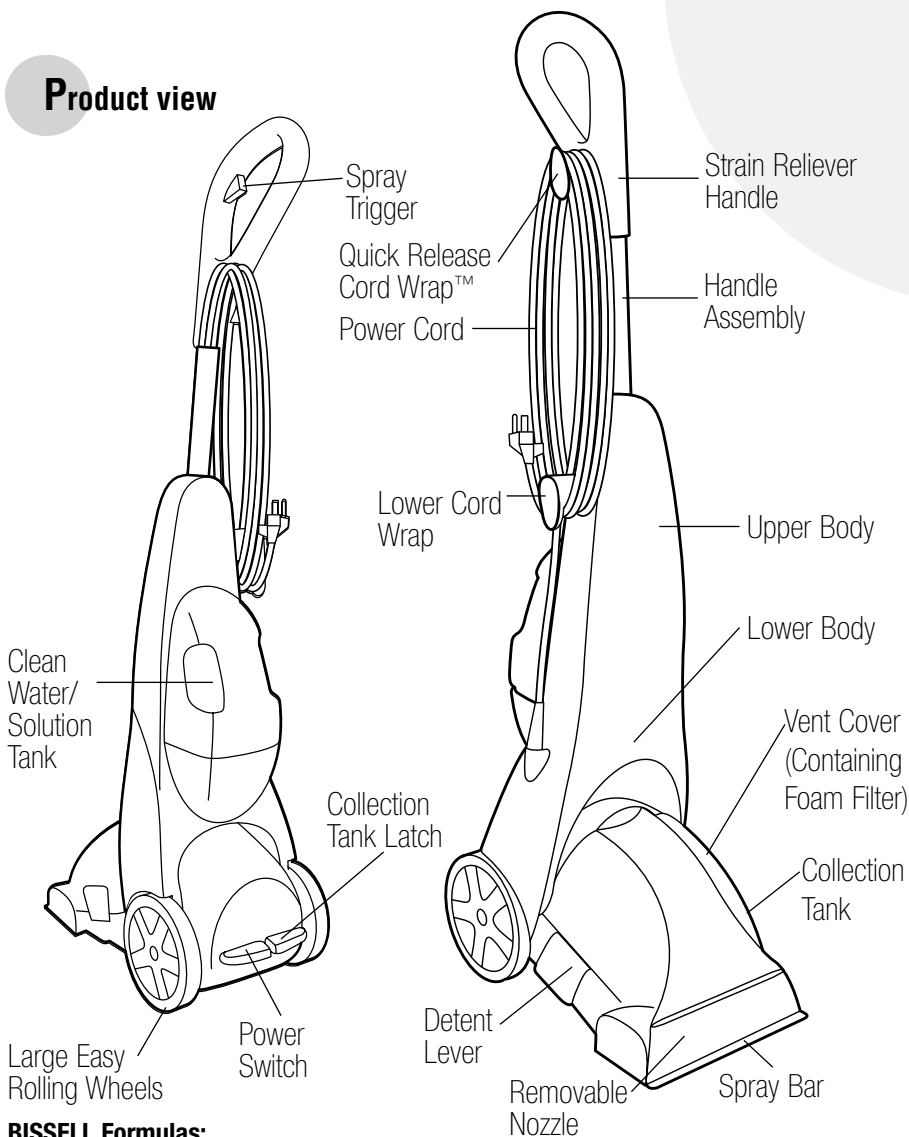
THIS MODEL IS FOR HOUSEHOLD USE ONLY.

 **WARNING:** This appliance must be earthed.

IMPORTANT FOR OPERATION ON A 220/240 VOLT A.C. 50/60 Hz POWER SUPPLY ONLY.

If your appliance is fitted with a nonrewireable BS 1363 plug it must not be used unless a 13 amp (ASTA approved to BS 1362) fuse is fitted in the carrier contained in the plug. Spares may be obtained from your BISSELL supplier. If for any reason the plug is cut off, it must be disposed of, as it is an electric shock hazard should it be inserted into a 13 amp socket.

Product view



BISSELL Formulas:

These items are available for purchase. To order replacement parts, additional tools or formulas, please refer to page 19.



1.42 L
Fibre Cleansing
Formula™ with
Scotchgard™
protector



1.42 L
Multi-Allergen
Removal™ Formula
with Scotchgard™
protector



1.42 L
Pet Odor and Soil
Removal™ Formula
with Scotchgard™
protector



1.42 L
Natural Orange
Extract Formula™ with
Scotchgard™ protector



1.42 L
Lavender Essence
Formula™ with
Scotchgard™
protector




32 oz.
Hard Floor
Solutions™
Formula

How to put it together

This user's guide has been designed to help you get the most satisfaction from your BISSELL lightweight deep cleaner. You'll find assembly and operating instructions, safety precautions, as well as maintenance and troubleshooting instructions. Please read this user's guide thoroughly before assembling your deep cleaner.

Pay particular attention to the product diagram, assembly instructions, and part names. Locate and organize all parts before assembly. Familiarize yourself with the parts and where they go. Following this user's guide will greatly enhance your ability to get the most performance from your BISSELL deep cleaner for many years.

Assembly

Your deep cleaner assembles quickly and easily. The only tool you will need to assemble your deep cleaner is a Phillips Head  screwdriver.

Your deep cleaner is packaged with the following items:

Handle assembly

Upper body

Lower body with collection tank

Clean water/solution tank

3 Screws

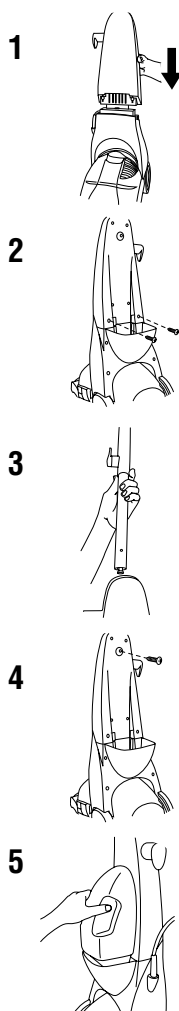
1. Slide upper body into lower body.
2. Secure with screws.
3. Slide strain reliever handle down into upper body until it will go no further.
4. Secure with screw.
5. Place clean water/solution tank on back of unit.

Other components

Clean water/solution tank - holds approximately 2 Litres of hand hot tap water and cleaning solution.

Collection tank - holds approximately 2 Litres of dirty water.

Power cord - for storage, wrap power cord around upper and lower cord wraps. Secure plug to cord with molded clip.



Operation

Before you clean

1. Plan activities to give carpet time to dry.
2. Remove easily moved furniture (chairs, lamps, coffee/cocktail tables, etc.) from room if needed.
3. Vacuum carpet thoroughly.
4. Decide where to begin — and end — your job. Clean in 3' X 4' sections, starting in areas farthest from exit. Plan to leave a path open to empty soiled water and refill cleaner.
5. Carpeting will dry in three to four hours, depending on carpet style and air circulation in room. A floor fan speeds drying.
6. Replace furniture on damp carpeting by placing waxed paper under legs until floor dries completely.

Fill the tank

1. Remove the clean water/solution tank by lifting it straight up, then away from the lower body.
2. Unscrew the black cap at the bottom of the clean water/solution tank.
3. Add one of the BISSELL cleaning formulas for deep cleaning machines to the formula fill line on the clean water/solution tank. Fill the rest of the tank with hand hot (not boiling) tap water to the water fill line. Replace and tighten the black cap.
4. Place clean water/solution tank on lower body.
5. Rotate Quick Release Cord Wrap™ to release the power cord and plug into an outlet.

WARNING:

To reduce the risk of fire, use only BISSELL cleaning formulas for deep cleaning machines. Use of cleaning formulas that contain lemon or pine oil may damage this appliance and void warranty. Chemical spot cleaners or solvent-based soil removers should not be used. These products may react with the plastic materials used in your deep cleaner, causing cracking or pitting.

Tip:

Always vacuum thoroughly before you deep clean. If possible, move large furniture to an area you will not be cleaning.

2



Tip:

Deep cleaning spots, spills and high traffic areas on a regular basis can prolong carpet life.

Operation

Carpet cleaning

1. With your foot, press the red power switch [located in foot of unit] ON.
2. With your foot, press the Detent Lever on right side of Lower Body.
3. Depress spray trigger to spray cleaning solution. **Do not overwet.**
4. To suction up water, repeat motion over same area without depressing the spray trigger.
5. Repeat Steps 3 and 4 until no more dirt can be removed.
6. Continue to clean entire carpet, working in 3' x 4' sections.
7. Empty the collection tank when dirty water reaches the full line, or when the clean water/solution tank is empty. See page 8 for instructions.
8. If floor nozzle stops spraying, turn power switch OFF and check water and cleaning solution levels. Refill if needed.

Cleaning solution section

Keep plenty of genuine BISSELL cleaning formulas for deep cleaning machines on hand so you can clean and protect whenever it fits your schedule. Always use genuine BISSELL cleaning formulas for deep cleaning machines. NON-BISSELL cleaning formulas may harm the machine and void the warranty.

Tip:

It is recommended that every time your clean water/solution tank is emptied of solution that you empty the contents of the collection tank. If the collection tank gets too full, you may begin to see foam spitting out of the vent cover. When this happens you will know it is time to empty the collection tank.

⚠️ WARNING:

To reduce the risk of fire and electric shock due to internal damage, use only BISSELL cleaning formulas intended for use with deep cleaning machines.



1.42 L
Fibre Cleansing
Formula™ with
Scotchgard™
protector



1.42 L
Multi- Allergen
Removal™ Formula
with Scotchgard™
protector



1.42 L
Pet Odor and Soil
Removal™ Formula
with Scotchgard™
protector



1.42 L
Natural Orange
Extract Formula with
Scotchgard™ protector



1.42 L
Lavender Essence
Formula with
Scotchgard™
protector



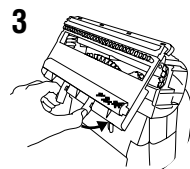
32 oz.
Hard Floor
Solutions™
Formula

Operation

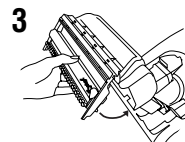
Hard floor cleaning

1. Attach hard floor tool to unit.
2. Remove the collection tank (refer to steps 3a and b in the Maintenance and care section below)
 - A. For 1970 series it is necessary to remove the cross action brush first. Using your thumbs squeeze the 2 grey tabs towards the outside of the unit. Push down at the same time and release the cross action brush.
3. Attach the hard floor tool by hooking it into the front of the removable nozzle and swinging it down until the tabs pop into place.
4. Replace the collection tank. Be sure to attach the 2 latches.
5. Fill solution tank with BISSELL Hard Floor Solutions™ to FORMULA fill line.
6. Fill solution tank with hot (not boiling) tap water to the WATER fill line.
7. Follow steps 1-8 in Carpet cleaning section on page 7.

⚠ WARNING:
To reduce the risk of injury from moving parts and/or electrical shock, turn power switch OFF and disconnect plug from electrical outlet before performing maintenance or troubleshooting checks.



2080 series
OR

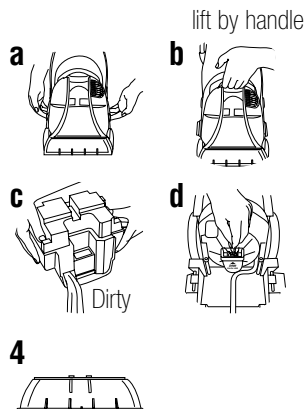


1970 series

Maintenance and care

When your done

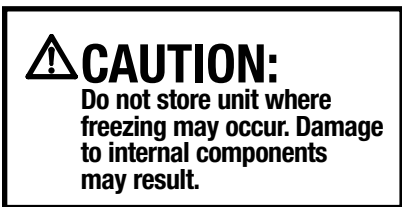
1. Turn power switch OFF.
2. Unplug power cord from outlet.
3. Remove and empty collection tank.
 - a. Release collection tank latches (1 each side) by pulling up from bottom of latch and then out.
 - b. Carefully lift collection tank from lower body.
 - c. Carry collection tank to a toilet or sink. To empty, pour out contents using opening at back of tank.
 - d. Rinse collection tank thoroughly.
 - e. Remove lint and hair from red gasket in base of unit. **(Do not remove gasket)**
3. Clean nozzle window by lifting latch and removing from machine. Rinse under running water. When finished replace nozzle and secure with latch.
4. Replace collection tank on lower body and secure with latches.



Maintenance and care


When your done continued

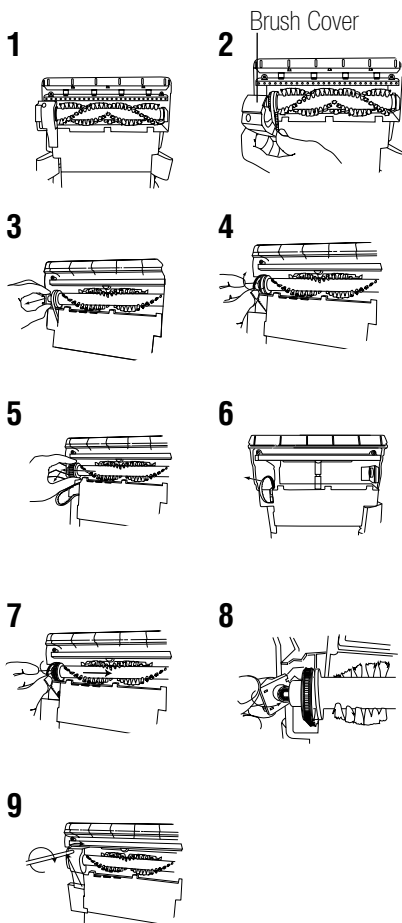
5. Wrap power cord around Quick Release Cord Wrap™ on side of deep cleaner.
6. Wipe all surfaces with a soft cloth. Store cleaner upright in a protected, dry area.
NOTE: You may have cleaning solution remaining in the clean water/solution tank. You may store your deep cleaner this way for the next cleaning task, but never keep soiled solution in the collection tank.



Install the replacement brush belt

*PetWash PowerBrush (2080 series) only

1. Turn the power switch OFF and unplug from wall outlet.
2. Remove clean water/solution and collection tanks.
3. Lie machine down to access the bottom of the machine.
4. With a Phillips head screwdriver , unscrew the brush cover and remove.
5. Remove the brush end cap and remove belt from brush.
6. Brush can now be removed.
7. Belt can be removed by sliding off the motor pulley.
8. Clean or replace belt, attach belt to motor pulley and brush and insert brush into right side end cap.
9. Reattach the left end cap and slide brush back into place.
10. Replace the brush cover and screw into place.



Troubleshooting

Reduce spray or no spray.

Possible causes

1. Clean water/solution tank empty

Deep cleaner not picking up cleaning solution.

Possible causes

1. Collection tank not aligned/secured
2. Collection tank full
3. Removable nozzle installed improperly



WARNING:

To reduce the risk of fire, electric shock, or injury, unplug machine from outlet before servicing.

Remedies

1. Refill tank with water and formula

Remedies

1. Check tank for proper alignment and refill tank with cleaning solution and water
2. Empty tank
3. Align four "hooks" into bottom first, then snap into place on top

Other maintenance or service not included in the manual should be performed by an authorized service representative.

Thank you for selecting a BISSELL product.

Please do not return this product to the store.

BISSELL Consumer Services

If your BISSELL product should require service:

In the UK, Australia or New Zealand, call BISSELL Consumer Services at the numbers below and we will give you the location of a BISSELL Authorized Service Center in your area. For all other countries, contact your local in country distributor for questions, service, or repair.

If you have questions about your warranty or need replacement parts please contact the numbers below.

For UK inquiries:

Monday - Thursday 9 am — 5 pm
Friday 9 am — 4 pm

BISSELL Homecare (Overseas) Inc.

The Boat Yard
105 Straight Road
Old Windsor
Berkshire, SL4 2SE
United Kingdom
Telephone: 0870-225-0109

For New Zealand inquiries:

Monday - Friday 9 am — 5 pm

Parex Industries Ltd.

103 Central Park Drive
Henderson
Auckland
New Zealand
Telephone: 0800-247-735

Or visit the BISSELL website - www.bissell.com

When contacting BISSELL, have model number of unit available.

Please record your Model Number: _____

Please record your Purchase Date: _____

Note: Please keep your original sales receipt. It provides proof of date of purchase in the event of a warranty claim. See Warranty on page 12 for details.

Please do not return this product to the store.

For Australian inquiries:

Monday - Friday 9 am — 5 pm

BISSELL AUSTRALIA PTY LIMITED

Unit 35
15 Ricketts Road
Mount Waverley, Victoria 3149
Australia
Telephone: 1-800-811-183

For all other inquiries:

Monday - Friday 8 am — 4 pm

BISSELL Homecare, Inc.

PO Box 1888
Grand Rapids, MI 49501 USA
Telephone: 01-616-453-4451
Fax: 01-616-453-1383

Replacement parts

Item Part No. Part Name

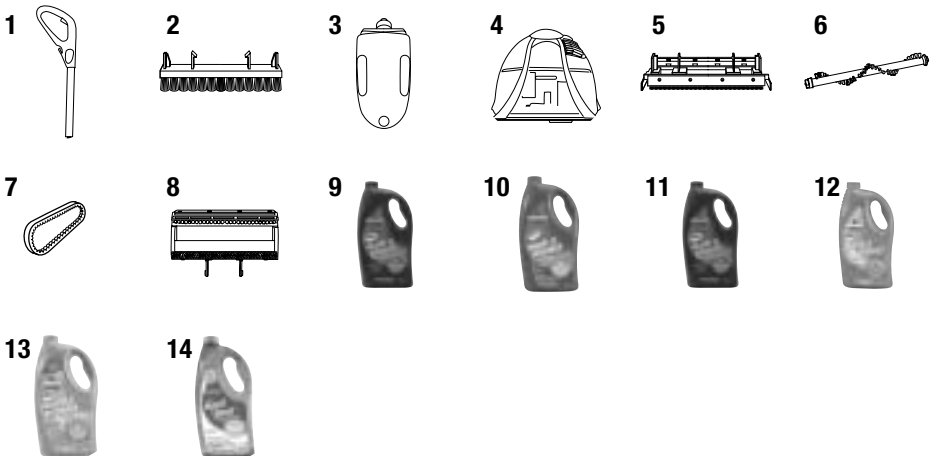
QuickWash – 1970 Series

| | | |
|---|----------|---------------------------|
| 1 | 203-5519 | Handle Assembly |
| 2 | 203-5545 | Cross Action Brush |
| 3 | 203-5537 | Clean Water/Solution Tank |
| 4 | 203-5522 | Collection Tank |
| 5 | 203-5547 | Bare Floor Tool |

PetWash PowerBrush – 2080 Series

| | | |
|----|----------|---|
| 1 | 203-5520 | Handle Assembly |
| 3 | 203-5540 | Clean Water/Solution Tank |
| 4 | 203-5523 | Collection Tank |
| 6 | 203-5546 | Dirt Lifter PowerBrush |
| 7 | 203-5549 | Belt |
| 8 | 203-5548 | Bare Floor Tool |
| 9 | 710E | 1.42 L Fibre Cleansing Formula™ with Scotchgard™ protector |
| 10 | 720E | 1.42 L Multi-Allergen Removal™ Formula with Scotchgard™ protector |
| 11 | 730E | 1.42 L Pet Odor and Soil Removal™ Formula with Scotchgard™ protector |
| 12 | 740E | 1.42 L Natural Orange Extract Formula™ with Scotchgard™ protector |
| 13 | 750E | 1.42 L Lavender Essence Fibre Cleansing Formula™ with Scotchgard™ protector |
| 14 | 0484 | .95 L Hard Floor Solutions |

* Not all parts included with every model.



Warranty

This warranty gives you specific legal rights, and you may also have other rights which may vary from country to country. If you need additional instruction regarding this warranty or have questions regarding what it may cover, please contact BISSELL Consumer Services by telephone, or regular post as described below, or contact your local in country distributor.

Limited Two Year Warranty

Subject to the *EXCEPTIONS AND EXCLUSIONS identified below, BISSELL Homecare, Inc., will replace (with new or remanufactured components), at BISSELL's option, free of charge from the date of purchase by the original purchaser, for two years any defective or malfunctioning part do to manufacturers defect.

This warranty applies to product used for personal, and not commercial or rental service. This warranty does not apply to fans or routine maintenance components such as filters, belts, or brushes. Damage or malfunction caused by negligence, abuse, or use not in accordance with the User's Guide is not covered.

For UK inquiries:

Monday - Thursday 9 am — 5 pm
Friday 9 am — 4 pm

BISSELL Homecare (Overseas) Inc.

The Boat Yard
105 Straight Road
Old Windsor
Berkshire, SL4 2SE
United Kingdom
Telephone: 0870-225-0109

For Australian inquiries:

Monday - Friday 9 am — 5 pm

BISSELL AUSTRALIA PTY LIMITED

Unit 35
15 Ricketts Road
Mount Waverley, Victoria 3149
Australia
Telephone: 1-800-811-183

For New Zealand inquiries:

Monday - Friday 9 am — 5 pm

Parex Industries Ltd.

103 Central Park Drive
Henderson
Auckland
New Zealand
Telephone: 0800-247-735

For all other inquiries:

Monday - Friday 8 am — 4 pm

BISSELL Homecare, Inc.

PO Box 1888
Grand Rapids, MI 49501 USA
Telephone: 01-616-453-4451
Fax: 01-616-453-1383

BISSELL HOMECARE INC. IS NOT LIABLE FOR INCIDENTAL OR CONSEQUENTIAL DAMAGES OF ANY NATURE ASSOCIATED WITH THE USE OF THIS PRODUCT. BISSELL'S LIABILITY WILL NOT EXCEED THE PURCHASE PRICE OF THE PRODUCT.

*EXCEPTIONS AND EXCLUSIONS FROM THE TERMS OF THE LIMITED WARRANTY

THIS WARRANTY IS EXCLUSIVE AND IN LIEU OF ANY OTHER WARRANTIES EITHER ORAL OR WRITTEN. ANY IMPLIED WARRANTIES WHICH MAY ARISE BY OPERATION OF LAW, INCLUDING THE IMPLIED WARRANTIES OF MERCHANTABILITY AND FITNESS FOR A PARTICULAR PURPOSE, ARE LIMITED TO THE TWO YEAR DURATION FROM THE DATE OF PURCHASE AS DESCRIBED ABOVE.



©2007 BISSELL Homecare, Inc.
Grand Rapids, Michigan
All rights reserved. Printed in China
Part Number 120-4016
Rev 10/07
Visit our website at:
www.bissell.com

Scotchgard is a trademark of 3M

